



PEOPLE

TEST · LIVE · LAND · FOR



# HOUSE DESIGN 3

- APARTMENT HOUSE & LOFT
- COMPACT HOUSE
- MID-SIZED HOUSE
- LARGE-SIZED HOUSE



# Apartment Warsaw City Center

Design Monika Bronikowsky, Adam Bronikowsky / HOLA Design  
Location Warsaw, Poland Total area 150m<sup>2</sup> Materials Dark  
smoked oak, White epoxy screed, Lacquered MDF Completion  
2012 Photographer Dariusz Majgier



{ Bold arrangement of the apartment in the very centre of Warsaw giving an amazing view on the Palace of Culture and Science – one of the most characteristic objects in Poland. The spacious living room with the dining room where the bright colours start to show. The kitchen in the burning bright red is separated from the dining room only by means of the glass wall, with the working table suspended in between two pillars. The day room was individually designed by the designers – TV wall made of MDF boards composition in three dimensions. In the middle of the apartment an isolated glazed bathroom facing the living room giving a view on the Palace of Culture. Crooked hanging walls surrounding the bathroom have been the idea of the owner and consisted the starting point for the design of the interior of this unique apartment. The bedroom has been separated from the day part by means of the double sliding door by the designers. With a hidden entrance to the wardrobe closet, the bedroom completely differs from the rest of the apartment. Glamour elements appear here, rich and ornamented, golden colour upholstery and elegant black elements which consist the balance for the white day space filled with the vivid coloured items. }

**Monika and Adam Bronikowsky** lead HOLA Design, a Polish design studio with international scope, member and partner of international associations (The Design Society and International Interior Design Association). They participate as jurors in industry contests, sharing their knowledge with the media. Building on gained experience and knowledge of world's trends in architecture and design, they unite professionalism, honesty and common sense with attention to quality, originality and functionality proposed solutions focusing on customer satisfaction first. Their goal is conscious creation of friendly space which fulfills users' needs.



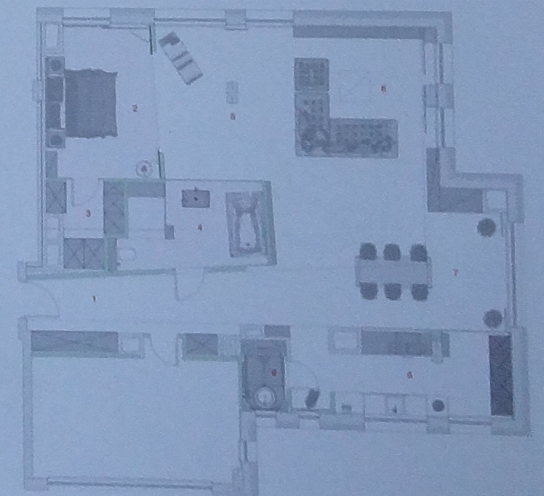








- 1 ENTRY
- 2 BEDROOM
- 3 WARDROBE CLOSET
- 4 BATHROOM
- 5 DAY LOUNGE
- 6 LIVING ROOM
- 7 DINING ROOM
- 8 KITCHEN
- 9 TOILET



FLOOR PLAN